



Your guide

to the budget and Council Tax
2025 – 2026



**Barnsley – the
place of possibilities**



 [BarnsleyCouncil](https://www.facebook.com/BarnsleyCouncil)

 [barnsley.gov.uk/Budget](https://www.barnsley.gov.uk/Budget)

 [barnsley.gov.uk/Council-Tax](https://www.barnsley.gov.uk/Council-Tax)

Barnsley
**20
30**


BARNSELY
Metropolitan Borough Council

This guide looks at...

- **your Council Tax and how it's calculated**
- **where the funding for the budget comes from**
- **how we'll spend and invest in Barnsley**
- **support for you and your family**
- **answers to your frequently asked questions.**



Creating an ambitious future

We've made some great progress in making Barnsley the place of possibilities. Our continued focus is to invest in our borough. We do this because we want to give people ambition and a sense of pride in where they live. We've received some one-off government funding, and we're using this to pilot investments in key areas, such as our young people and communities, as well as our highways making a positive impact on people's day-to-day lives.

Our journey for the next three years

We're always one step ahead with our planning and our forward-thinking approach helps us balance our budgets. Our Council Plan sits alongside our financial plan and shows how we'll focus on our priorities and collectively deliver our services to best support residents, communities, partners and businesses.

Funding our day-to-day services

We've worked hard to balance our budget for this year, which means the amount of money that we're planning to spend won't be more than the amount we receive. This is never easy, and it's becoming increasingly difficult. Our services are facing higher demand, and we estimate that we'll need an additional £34 million for our day-to-day running costs next year. We've done lots over the years to transform the way we work as a council to reduce costs and deliver better services.

But unfortunately, as is becoming common each year, we have to increase council tax to meet the cost of delivering our services.

We very much recognise the financial pressure on you and your families. It's an incredibly hard decision, which hasn't been taken lightly, but without this extra income, we would have to stop delivering some of our services, impacting everyone.

The council's element of the Council Tax will increase by 4.9%*. This is broken down by 2% to support Adult Social Care and 2.9% to fund other vital services. This includes support for people that need it the most, schools and education services, maintaining open spaces, bin collections, roads, highways and street lighting maintenance.



*This does not include the amount you pay towards police and fire authorities.

We know money is tight and we have not taken this decision lightly. We've explored a number of options and done everything we can to minimise the impact of this increase on you and your family. Page 7 provides more information about support for you and your family.

Annual increase 4.9%

What will the increase mean to me?

The financial impact of this increase will depend on the house band you live in. The table below provides the weekly and annual increase based on your home's band.

| Band | Barnsley Council | South Yorkshire Fire | Mayoral Police and Crime Commissioner | Total 2025-26 Council Tax | Weekly Cost | Monthly Cost over 12 months |
|------|------------------|----------------------|---------------------------------------|---------------------------|-------------|-----------------------------|
| A- | £1,043.57 | £50.03 | £147.24 | £1,240.84 | £23.86 | £103.40 |
| A | £1,252.28 | £60.03 | £176.69 | £1,489.00 | £28.63 | £124.08 |
| B | £1,460.99 | £70.04 | £206.14 | £1,737.17 | £33.41 | £144.76 |
| C | £1,669.71 | £80.04 | £235.59 | £1,985.34 | £38.18 | £165.45 |
| D | £1,878.42 | £90.05 | £265.04 | £2,233.51 | £42.95 | £186.13 |
| E | £2,295.85 | £110.06 | £323.94 | £2,729.85 | £52.50 | £227.49 |
| F | £2,713.27 | £130.07 | £382.84 | £3,226.18 | £62.04 | £268.85 |
| G | £3,130.70 | £150.08 | £441.73 | £3,722.51 | £71.59 | £310.21 |
| H | £3,756.84 | £180.10 | £530.08 | £4,467.02 | £85.90 | £372.25 |

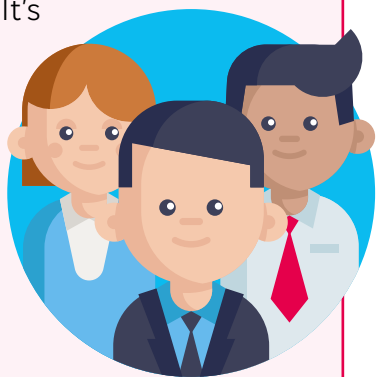
If you live in an area that has a Parish Council, you may also have to pay an additional amount set by the Parish Council which we also collect on their behalf. This amount can be found on our website: [barnsley.gov.uk/Council-Tax](https://www.barnsley.gov.uk/Council-Tax)

Where does our budget come from?

The budget comes from a number of different sources.

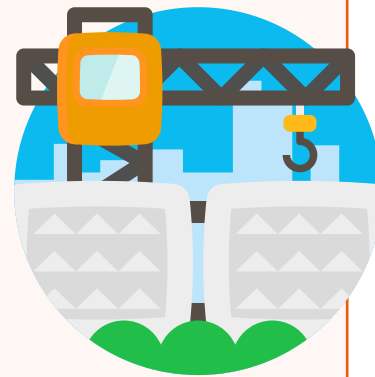
Revenue budget

The revenue budget is spent on our day-to-day running costs such as employees' pay, schools, social care, planning, public health, bin collections and road maintenance. It's funded from a combination of government grants, fees and charges, business rates and Council Tax.

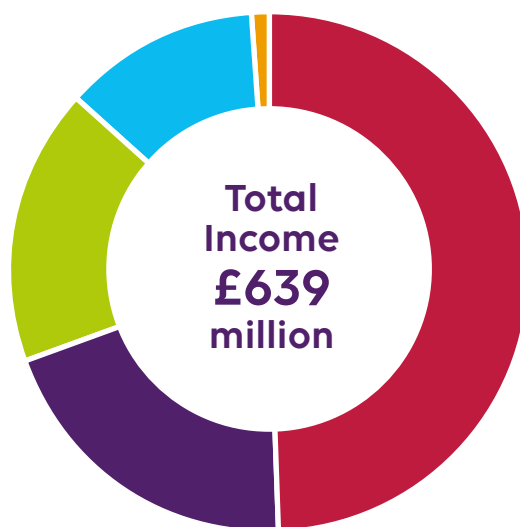
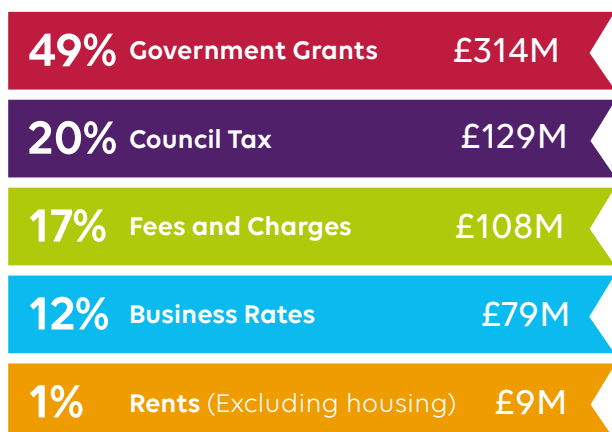


Capital budget

We also have a separate capital budget which is used to pay for one-off investments and projects. Capital funding comes from selling off our land and buildings, borrowing, and specific grants and contributions. Council Tax is not used to directly fund capital investments and we cannot use this funding to pay for the cost of running day-to-day services.



Council Tax will only contribute 20% towards the total amount we need in 2025-26 to deliver the services you and your family need - now and in the future.



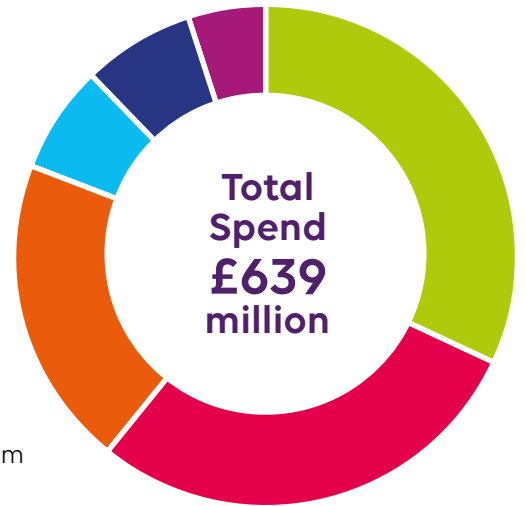
As you can see, the main source of funding comes from central government grants. This is why it impacts so much on our budget when the government make year-on-year cuts.

How is the budget spent?

In 2025-26, we'll spend approximately **£639 million** on our revenue budget, providing you and your family with a range of services. The budget is split between our key service areas which are vital to you and your family and invested in those areas where it is most needed or will have the biggest impact. You can find out more about how we will be investing on page 6.



*In addition, we spend £79 million on our council houses which is mainly funded from housing rents.



Here is a more detailed breakdown of how the budget is allocated between service areas.



Total spend £639 million

Our journey for the next three years

Our [Council Plan](#) for 2024-2027, sets out what we want to achieve in the next three years against our priority areas and how we're committing resources, people and time to ensure success. We're focusing on transforming the way we deliver services for our residents while continuing to make brave investments in our borough.



This year we've received some one-off government funding, and we're using this to pilot investments in key areas.

£1.5 million in our children and young people



The Great Childhood Ambition is our commitment to improving the lives and futures of our children and young people so that everyone can be the best they can be.

We recognise that they will face quite different challenges as they prepare for their future.

That's why we're investing in their skills, qualifications, and experiences so that they can achieve their greatest aspirations, gain pathways to work and have a better quality of life. This includes additional GCSE Maths and English support to help students catch up and excel, and the expansion of the 'Every Child a Coder' programme, equipping young people with essential digital skills for careers in AI and automation at our centre of digital excellence.

Additionally, along with existing projects like the Seam, Northern Academy for Vocal Excellence (NAVE), the Youth Activity Park and the upcoming opening of the Youth Zone, we'll provide more opportunities for youth engagement and development.

£5 million into transport for learning opportunities



We also know that travel can be a barrier to accessing activities and extra learning opportunities, and the cost-of-living crisis has put extra pressures on families.

To help lighten the load, we're investing £5 million to pilot free bus fares for under 18s.

£3.5 million in our Neighbourhood Services



We're listening to your feedback and intelligence from our services.

That's why we have set aside £1.5 million to invest in local areas with plans to increase the sweeping of pavements, weed control, and improve key routes and areas.

In addition to this, we're also investing £2 million in small-scale infrastructure projects in local communities like replacing broken benches and adding new litter bins and flower planters.

Area and Ward Councils will be involved in deciding what is the top priority for the areas they represent but you will see physical improvements in the area you live in.

£12 million to continue improving our highways



We've already made significant improvements to our roads, and you'll see a real difference when you're travelling throughout Barnsley.

We want Barnsley to be a great place to live, work and visit, and we know that our infrastructure is a key part of this.

To help achieve this, our current £8 million programme will be boosted by an additional £4 million (£2 million from our budget and £2 million from the government), allowing us to make improvements to estates and smaller streets across the borough.

Support for you and your family

Depending on your circumstances, you may be eligible for council tax discount or financial support in paying your council tax, for example if you live alone, are disabled or on a low income.

We've made some changes to the Local Council Tax Support scheme. The proposals have been shared through a public consultation and take into account your views.

We currently support almost 23,000 residents through our Local Council Tax Support Scheme which supports residents on a low income. The support provided to working-age residents through the scheme has recently been reviewed and following a public consultation, a number of changes have been made to reflect changing needs.

The new scheme continues to be fair, consistent and prioritises our most vulnerable residents. It also makes sure the scheme is sustainable in the future and encourages residents to seek employment.

If you're struggling with money or need support with the cost of living, there's help and support available. On our More Money in Your Pocket webpage you can find out about the range of local help that's available, as well as national support.

On the page you can find out more about:



Housing support



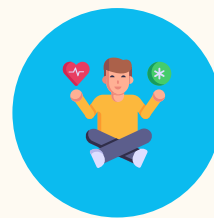
Support with paying your bills



Food support



Help to manage your money



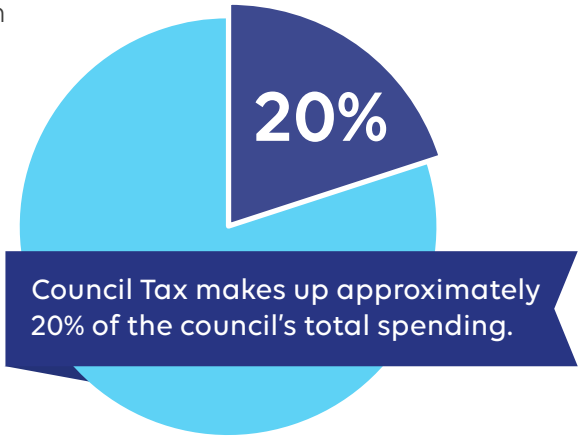
Wellbeing support



To take a look at the help and support available, go to barnsley.gov.uk/MMIYP.

This week, you were served by Barnsley Council

It's important to remember that Council Tax is only a contribution towards the day-to-day running costs of delivering our services – it's not a charge for individual services. Council Tax only contributes towards around 20% of the total amount we'll spend delivering our services and does not contribute towards any capital investment schemes we deliver.



Here's a snapshot of what your Council Tax contributes towards in one week

 **587 tonnes**

of paper, cardboard and mixed recyclables



193,750 square metres of grass was cut



We've gritted and cleaned roads within the borough's **729 mile** network



191,933 bins were emptied



100 incidents 

of fly tipping were removed

 **79 incidents**

of anti-social behaviour were dealt with



1,728 children and young people receive services from Children's Social Care every month

3,131 people were cared for, including those receiving home support (as of February 2025)



It costs around

£12M a week

To provide the services you need. Council Tax only contributes £2M towards these costs.

How do you work out how much Council Tax you need to charge?

To work out how much Council Tax our residents need to pay, we work out how much money we need to deliver our services and then take away the money we receive from the government and other sources. This leaves us with a funding gap or shortfall that we need to fund through Council Tax contributions.

Why has my Council Tax increased?

Despite our efforts to make financial savings, we're faced with growing demand on our services which increases the gap in funding we need to fill. If we didn't increase Council Tax to fill this gap, we'd have to cut vital services as the funding is simply not there.

Why is my Council Tax bill more than my friends?

The amount of Council Tax you pay depends on the property band you live in. All properties are banded into one of eight valuation bands (A to H) set by the government. If you live in an area with a Parish Council, you may also have to pay an additional precept set by them which is added to your bill.

Why do I have to pay for services I don't use?

Council Tax is like income tax – it's not a charge for individual services, it contributes towards the overall running costs of delivering our services. It contributes towards lots of services you use daily that benefit everyone - such as your bin collections, road maintenance and public health. Some services are used by fewer residents depending on personal circumstances but remember, we never know what services we may need in the future.

How do I pay my council tax?

You'll receive your bill in March which outlines payment options. You can pay the annual bill in one go or in monthly instalments. The easiest way to pay is to set up a Direct Debit – you can choose whether to pay over 10 or 12 months and you can even choose out of four dates when the payment leaves your account each month.

Even better, register for a My Bentax account so you can access information about your bill, change payment details and even register for paperless e-billing. To do this, visit:

barnsley.gov.uk/MyBentax

Council Tax – everything you need to know

What do I do if I can't pay my Council Tax?

If you're struggling to pay your bill, please let us know as soon as possible so we can make reasonable alternative payment arrangements.

What will happen if I miss a payment?

If you don't pay your Council Tax bill on time, we'll send you a reminder telling you how much is overdue which you'll be required to pay within seven days. If you fail to do so, you could lose the right to pay in instalments. If payment is still not made as required, recovery proceedings may be taken against you. For more information, visit:

barnsley.gov.uk/CTrecovery

Could I be eligible for a discount or exemption?

Depending on your personal circumstances, you may be eligible for a discount on your Council Tax, for example, if you're the only person over 18 living in your home, you're a full-time student, or your property is unoccupied whilst undergoing major repairs. In some cases, you may be eligible for council tax support or exempt from paying Council Tax at all. For more information about discounts and exemptions or to make an application, visit: barnsley.gov.uk/Council-Tax.

How can I find out more information?

Information about all aspects of Council Tax - including how to pay, telling us about changes to your circumstances, discounts and exemptions, and managing your account online can be found all in one place on our website: barnsley.gov.uk/Council-Tax.

To make things even more convenient, we've introduced a live webchat service to the Council Tax section of the website so someone will be on hand to deal with any queries you may have at the click of a button - freeing up phone lines and saving you time.

You will also find a full list of FAQs about the 2025-26 budget and Council Tax on the website at barnsley.gov.uk/Budget.

 [BarnsleyCouncil](https://www.facebook.com/BarnsleyCouncil)

 [Barnsley-abc](https://www.linkedin.com/company/barnsley-abc)

 [barnsleycouncilofficial](https://www.instagram.com/barnsleycouncilofficial)

 [BarnsleyCouncilOfficial](https://www.youtube.com/BarnsleyCouncilOfficial)



BARNLSLEY
Metropolitan Borough Council