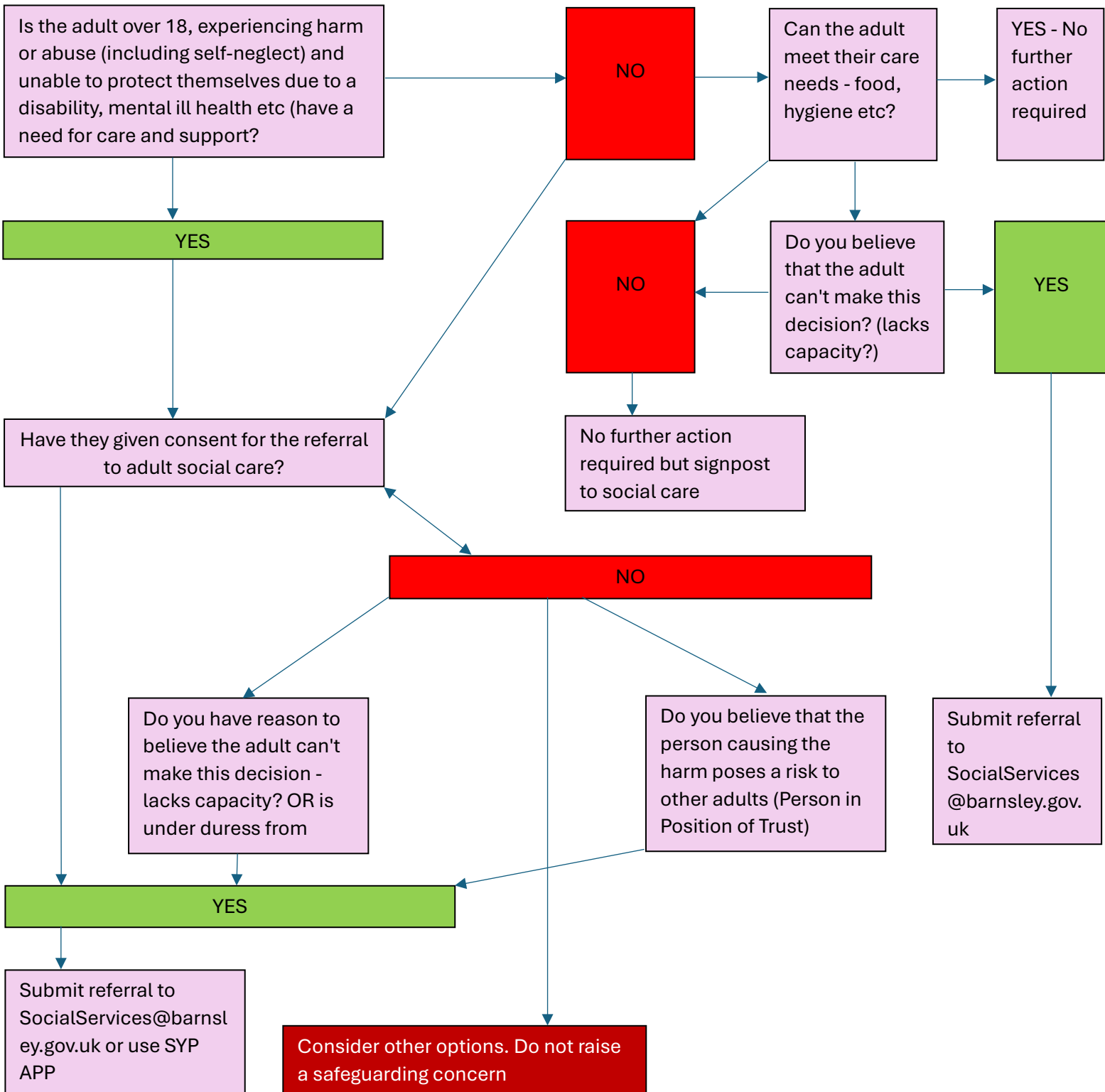


## FLOW CHART – SAFEGUARDING (BEST PRACTICE)



## Adult Social Care

- Adult Social Care work with adults aged 18+ who require support and advice to live safe and healthy lives. Adult Social Care will assess to establish if people require support from them or other organisations, this will include carers.
- Adult Social Care primarily work with adults who have given their consent unless they lack capacity, or the risks require Adult Social Care involvement (e.g. Self-neglect and/or Hoarding).
- The Mental Capacity Act (MCA) starts with the presumption of capacity, however, if an adult appears to be struggling to answer questions/respond appropriately we may need to consider that they lack capacity. Adults under the influence of drugs or alcohol, appear to have dementia and/or mental ill health or a learning disability may lack capacity to make decisions about Safeguarding. This information should be included in the referral.
- Adults with mental ill health may be supported by mental health services (SWYPFT), Adult Social Care or primary care. Contact details for SWYPFT are shown below.
- Adults social care may work in partnership with Waythrough who provide specialist drug and alcohol services. Contact details are shown below.

### Alternative source of support – Consent is needed unless you believe the person is unable to give consent (lacks capacity to make this decision):

Mental Health		
Is the adult known to secondary mental health services?	01226 645000 (option 1)	Web link - <a href="https://www.southwestyorkshire.nhs.uk/services/spa-team-barnsley/">https://www.southwestyorkshire.nhs.uk/services/spa-team-barnsley/</a>
Would they like to be referred to secondary MH services?	01226 645000 (option 1)	
Is the Adult receiving support from their GP?	Ask them to contact their GP	
Is the Adult receiving support from Adult Social Care?	01226 773300	Web link - <a href="https://www.barnsley.gov.uk/services/adult-social-care/help-with-your-mental-health/">https://www.barnsley.gov.uk/services/adult-social-care/help-with-your-mental-health/</a>
General sources of support - MH		Web link - <a href="https://www.barnsley.gov.uk/services/adult-social-care/help-with-your-mental-health/">https://www.barnsley.gov.uk/services/adult-social-care/help-with-your-mental-health/</a>

Does the adult require assessment under the Mental Health Act?	01226 772448	<a href="https://www.barnsley.gov.uk/services/adult-social-care/help-with-your-mental-health/mental-health-services/">https://www.barnsley.gov.uk/services/adult-social-care/help-with-your-mental-health/mental-health-services/</a>
<b>Domestic Abuse</b>		
IDAS – Barnsley Domestic Abuse Partner	03000 110 110	<a href="https://idas.org.uk/">https://idas.org.uk/</a>
General DA Information		<a href="https://www.barnsley.gov.uk/services/children-families-and-education/domestic-abuse-and-sexual-violence/">https://www.barnsley.gov.uk/services/children-families-and-education/domestic-abuse-and-sexual-violence/</a>
<b>Drug and Alcohol Support</b>		
Recovery Steps - Barnsley	01226 779066	<a href="https://humankindcharity.org.uk/service/barnsley-recovery-steps/">https://humankindcharity.org.uk/service/barnsley-recovery-steps/</a>
Need Help Now - HumanKind	01325 731160	
<b>Carer Stress</b>		
Barnsley Carer Service	01226 731160	<a href="https://barnsleycarers.co.uk/">https://barnsleycarers.co.uk/</a>
Support for Carers		<a href="https://www.barnsley.gov.uk/services/adult-social-care/information-for-carers/carers-support-groups-and-organisations/">https://www.barnsley.gov.uk/services/adult-social-care/information-for-carers/carers-support-groups-and-organisations/</a>
Adult Social Care	01226 773300	
<b>Poverty</b>		
Barnsley Citizens Advice	0800 144 88 48	<a href="https://barnsleycab.org.uk/">https://barnsleycab.org.uk/</a>
Full Poverty – Age UK	01226 776825	<a href="https://www.ageuk.org.uk/barnsley/our-services/warm-homes-checks-b87c43d0-5067-ee11-a81c-000d3aaf34ff/">https://www.ageuk.org.uk/barnsley/our-services/warm-homes-checks-b87c43d0-5067-ee11-a81c-000d3aaf34ff/</a>
Warm Homes – BMBC	01226 773366	<a href="https://www.barnsley.gov.uk/warmhomes">https://www.barnsley.gov.uk/warmhomes</a>