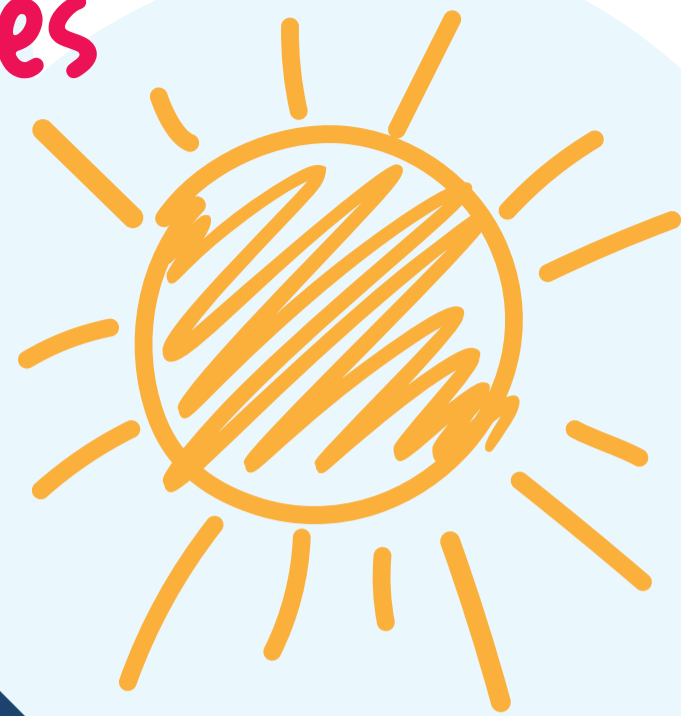


# Barnsley Children's Services Stronger Together

Barnsley's Practice Principles focus on a strengths and relational-based way of working.



## Our approach

### Signs of Safety

Signs of Safety® is a strengths-based approach that brings the child into the centre of decision making and helps build safety through fortifying relationships and networks. The Signs of Safety model provides the principles which underpin the way in which professionals work with children, young people and their families.

### Restorative Practice

This is an approach that supports practitioners in developing relationships with families to create and encourage positive change. Working with families to help build and maintain positive, healthy relationships, resolve conflict and facilitate healing. This leads to positive, long-lasting outcomes for children and families.

### Graded Care Profile 2

(GCP2) is an assessment tool used by practitioners alongside families to look at the quality of care provided to children and young people. It helps us to identify what's working well and what could be improved. This can give a focus to support parents to get the help they need to make change.



### Family Group Conferencing

When families need help to find solutions to difficulties, a coordinator supports a decision-making meeting. This enables the wider network of family and friends to develop a plan that can meet the children's needs.

## Our interventions

### Early Help

A whole-family approach focused on intervening early. This supports working with families so that small problems don't become big problems. Early Help is for everybody, for families with children and young people of any age.

### Social Work Academy

Our Social Work Academy provides tools, training and continuous professional development. This ensures students and social workers at all stages of their careers are supported to develop expertise and lead interventions based on solution focused, evidence-based approaches. This helps to achieve better outcomes for children and their families.

### Safe and Together

This model supports practitioners to enable children to remain in the care of the safe-parent. It encourages practitioners to think differently about how they approach domestic abuse.

### Practice Development Hub

The Practice Development Hub drives evidence-based good practice by providing training, tools, support and guidance for our children's workforce. The Hub ensures practitioners have the right skills, knowledge and support to improve outcomes for children and their families.

## Our Foundations



**BARNSELY**  
Metropolitan Borough Council



# Our house



Our aim is that we are one service with one goal, working together to build a brighter Barnsley for every child.

To do this, we use a Signs of Safety and Restorative approach. These tools are evidence-based, so we know that they have been tried, tested and work well to help the children and families we support.

## Signs of Safety is the roof of our house

It is our over-arching practice framework that sits within all aspects of what we do to achieve the best outcomes for our children, young people and families. This helps our practitioners to be child-focused, developing strong partnerships with families. Using tools helps families to identify strengths and risks, so we can work together to create safety for children.

To partner our Signs of Safety approach, Restorative Practice enhances our relationships with children and families and enables them to take more responsibility for finding solutions that create positive changes that are lasting.

## The Foundations

Our foundations for children's services includes our Social Care Practice Development Hub and our Social Work Academy. Practitioners will be supported to learn about the successful ways to work with families and what good practice looks like. Support is offered to every practitioner by the Practice Development Hub and our partnership training makes sure that the house and the practice principles stand strong. Our ambition is to create the right environment for practitioners to work together and have the right tools, support, guidance and expert knowledge to achieve the very best outcomes for children.

## The rooms of our house

These are some of the tools and interventions that practitioners can use while working with their families. This is how we achieve our three principles:

### Putting children first

Children are at the heart of everything we do, we make sure that their voice and lived experience drives our practice.

### Working together

We recognise that achieving good outcomes for our children and families requires strong multi-agency working, partnerships based on mutual respect and recognition of each others expertise.

### Strong and valued workforce

Our practitioners are our most valuable resource. We are committed to a culture of continuing professional development in an environment where practice is encouraged to flourish.



We work hard to ensure that our practitioners have the best evidenced-based tools for practice and we have highlighted some of our key practice tools on the right. We support our practitioners to use the right tools to meet individual family needs.

## The Graded Care Profile 2

This is a tool for when there are worries about neglect. It helps everyone through scoring to understand what families are doing well and what support they may need. It looks at areas such as health, food, clothing, hygiene and emotional care. It also considers the support families give their child (depending on their age) for things like play, school and friends to assess need.

## Safe & Together

This is a model that is focused on keeping children safe and together with their non-abusing parent. It supports healing from trauma, stability and nurturance. It has a focus on child-centred practice and supports work with perpetrators to reduce the risk of harm to a child.

## Family Group Conferencing

This is a tool to help make people who are connected to the family more aware of the difficulties the family are facing. This allows families to draw on their resources from the wider family network. This promotes the safety of the child and supports children with remaining in the care of their wider family.

## Early Help

This is a service accessible to everyone. Early help offers a wide range of interventions that can support families if they face problems. Getting the right support at the right time can stop a minor problem becoming a crisis.

